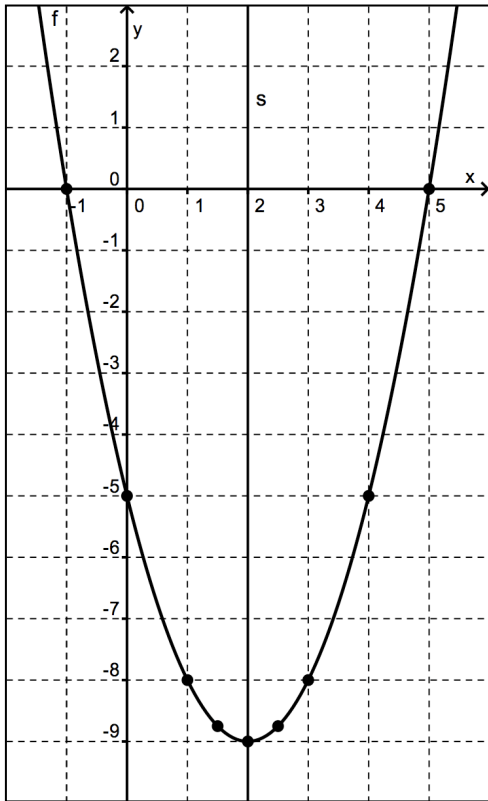
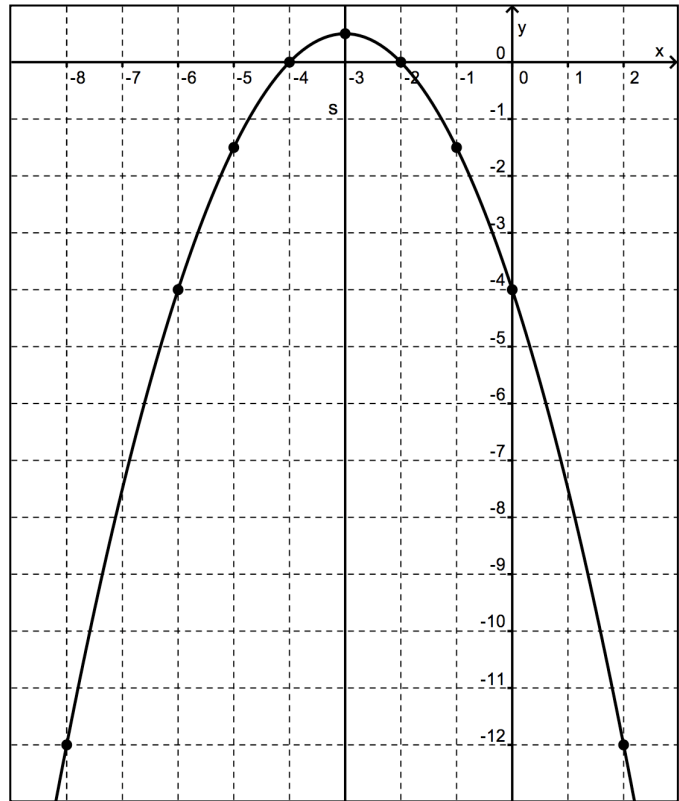


Annexe : graphiques des fonctions du second degré de la question 6

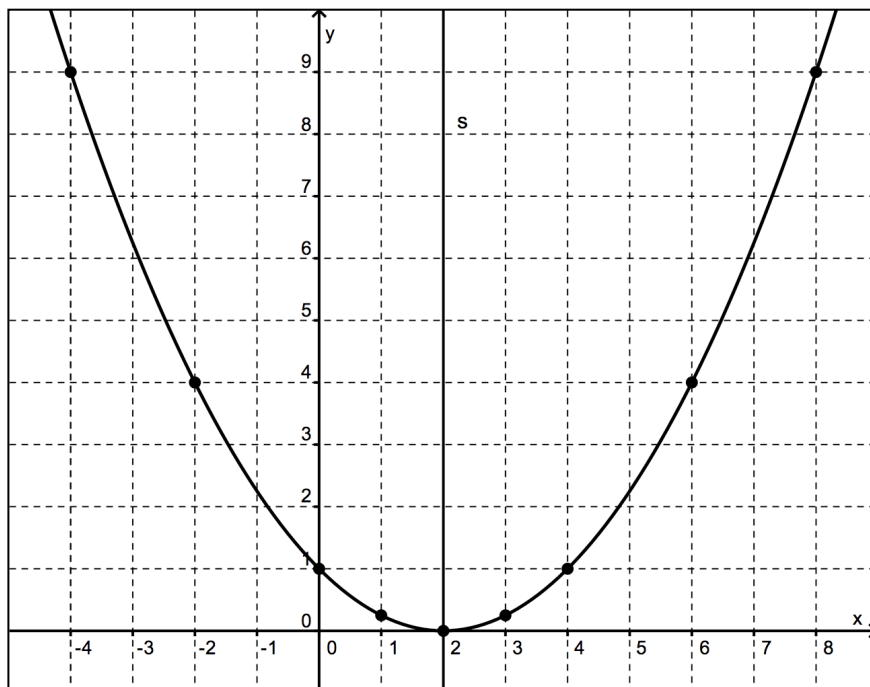
① $f(x) = x^2 - 4x - 5$



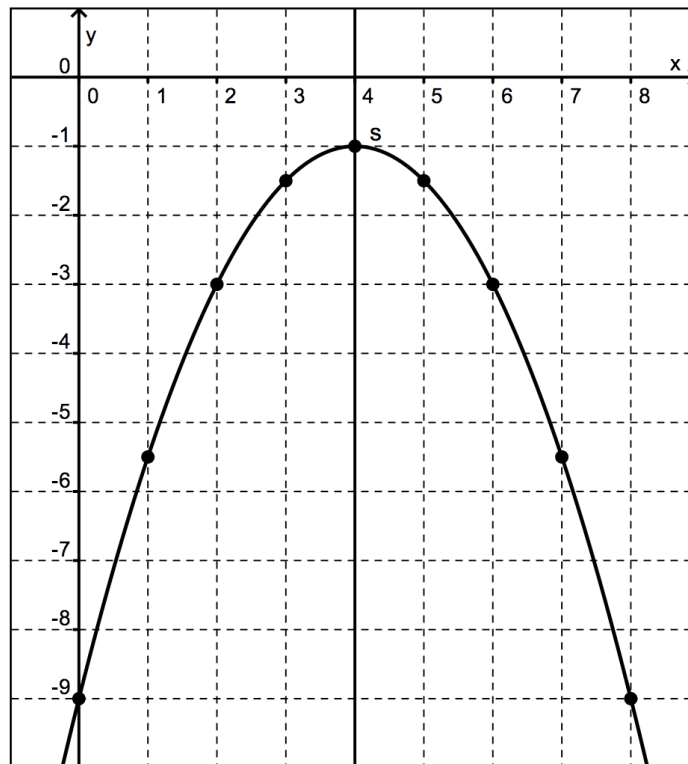
② $f(x) = -\frac{1}{2}x^2 - 3x - 4$



③ $f(x) = \frac{1}{4}x^2 - x + 1$



④ $f(x) = -\frac{1}{2}x^2 + 4x - 9$



⑤ $f(x) = \frac{1}{3}x \cdot (x + 3)$

